

***Paducah-McCracken County Riverport Authority  
2000 Wayne Sullivan Dr. Paducah, KY 42002  
Tennessee River Mile Marker 1.3 to 2.0***





# Paducah-McCracken County Riverport Authority Bulk Commodity Storage Yard and Transfer Facility Tennessee River Mile Marker 2.0



# ***Paducah-McCracken County Riverport Authority***

## **Major Commodity Transshipments by County**

### **13 in KY., 12 in IL., 3 in TN. & 3 in MO.**

<b>2019 &amp; 2020 Pine Bluff Materials Transshipments via Paducah-McCracken County Riverport Authority</b>	
<b>Tons</b>	<b>Kentucky Counties</b>
(+) 434,000 tons	McCracken
39,000 - 49,000 tons per county	Calloway, Graves, Lyon, Marshall
14,000 - 25,000 tons per county	Caldwell, Carlisle, Trigg
7,000 - 9,000 tons per county	Ballard, Crittenden, Hickman, Livingston
<b>Tons</b>	<b>Illinois Counties</b>
14,000 - 25,000 tons	Massac

<b>2020 - Southern FS Fertilizer Transshipments via Paducah-McCracken County Riverport Authority</b>			
<b>Tons</b>		<b>State</b>	<b>Counties</b>
7,076		Illinois	Saline, Hamilton
3,429		Illinois	Franklin, Perry, Jackson
6,370		Illinois	Franklin, Hamilton, Williamson
3,131		Illinois	Williamson
2,563		Illinois	Jackson
4,774		Illinois	Perry, Jackson
223		Illinois	Pulaski, Alexander
2,986		Illinois	Massac, Pope, Hardin
531		Illinois	Union
6,689		Illinois	Johnson, Pulaski, Alexander
1,365		Missouri	Cape, Scott, Bollinger
		Kentucky	Fulton, Hickman, Graves, Carlisle
4,010		Tennessee	Obion, Weakley, Gibson
<b>43,147</b>			

# ***Paducah Riverport Infrastructure Revitalization and Expansion Project***

## **Port Infrastructure Develop Program**

**Small Ports & Terminals Project per national Defense Authorization Act for Fiscal Year 2021\**

**Project cost will be approximately \$3.82 million**

## **Revitalization Components**

- Replace 1972 Nordberg 260T – Fixed Main Radial Stacker – 30"x 150'
- Replace 1966 Marco Model 650 - Fixed Radial Stacker (30" x 150') for Sand Storage area
- One Radial Hopper/Reclaimer with fixed conveyor for Sand Storage area
- Replace 1966 Marco Model 650 - Fixed Radial Stacker (30" x 150') for Rock Storage area
- Approximately 30,000 square feet for new ground storage pad laydown area and truck route in/out Bulk Yard Facility,
- Demolition and removal of old truck scale in Bulk Yard.
- Two Storage Domes Roof Replacement Systems – galvanized frames with tarp/cloth cover – increasing covered storage areas

## **Expansion Components**

Need identified via increased Federal projects for I-24 and Kentucky Dam along with servicing ongoing Regional growth and increased future commodity diversification for new businesses

- Installation of additional 90-foot x 11-foot truck scale. Reduce dwell times and increase fuel and transshipment efficiencies
- Install 240-foot x 30-foot steel frame with tarp canopy cover on fertilizer building conveyor loadout system. This will increase fertilizer product transshipments by increasing loadout of product during inclement weather conditions
- 3 Transfer Ground Conveyors – 30" x 100' to be utilized for bulk commodity Storage Yard area expansion and commodity diversification
- One Radial Stacker – 30" x 100' – to be utilized for new commodity storage area expansion within the confines of our existing bulk yard facility
- Purchase of four (4) Gen/Set 3phase 440-volt 83KW to supply power as needed for new ground conveyors and radial stacker



## ***Paducah Riverport Infrastructure Revitalization & Expansion Project***

Replace Three Fixed Radial Stackers

1972 Nordberg Model 260T Main Radial Stacker 30" x 150'

Replace 2 existing 1966 Marco Model 650 Radial Stackers 30" x 150'

Replace 1 Marco Radial Hopper/Reclaim with fixed conveyor system



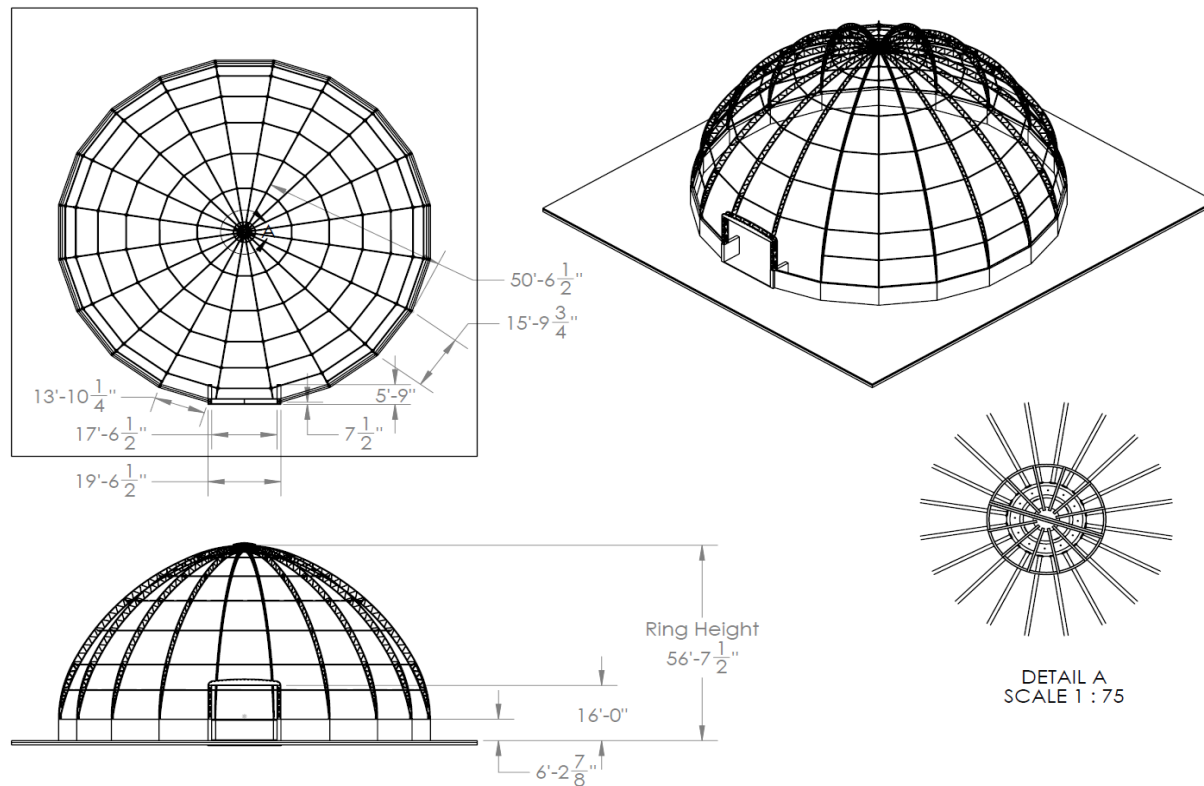
# Paducah Riverport Infrastructure Revitalization & Expansion Project

## Bulk Yard Dome A & B - Roof Reconstruction with galvanized frame and 15-year warranty tarp/cloth cover





# New Dome Roof Structures 100' and 108' feet in Diameter



100ft Dome

JPM STEEL  
FABRICATION

Drawn BY:  
Date:  
Rev:

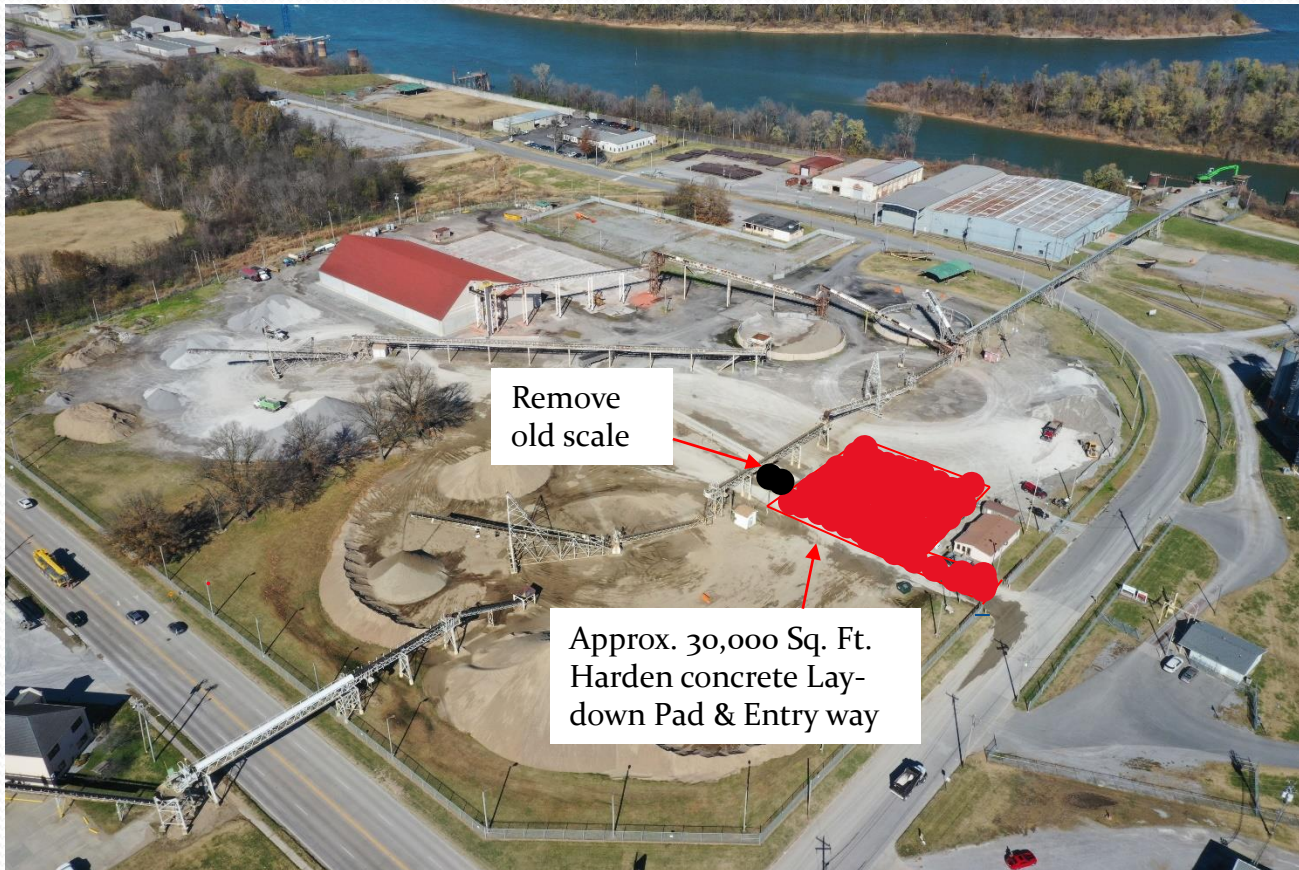
Sheet No.  
of

# ***Paducah Riverport Infrastructure Revitalization & Expansion Project***

Bulk Storage Yard Paved Pad Area and Entryway

Approximately 30,000 Sq. Ft.

Demolition & removal of old scale.





# Installation of Additional Truck Scale & Steel Frame and Fabric Canopy





***Paducah Riverport Infrastructure Revitalization & Expansion Project***  
**Bulk Yard Commodity Storage Expansion**  
**Three (3) 30" x 100' Ground Conveyors & 1 Radial Stacker**





# Paducah Riverport Infrastructure Revitalization & Expansion Project

1 Radial Stacker 30" x 100' minimum  
3 Transfer Ground Conveyors 30" x 100'

